

LOAD CELL H6F

- H6F load cells are available for manifold accurate measurement in the capacity 50kg to 2000kg
- Alloy steel, nickel plated, potted by adhesive inside, oil-proof, waterproof and anti-corrosive gas and medium, suitable for multiform environments.
- Single point cantilever, suitable for electronic scale, electronic platform scale, belt scale and other electronic weighing devices.
- Max. platform size: 50 ~200kg: 600×600
250 ~ 500kg: 600×800
750kg ~ 2t: 1200×1200

Important Features

- Capacities: 50kg ~ 2000kg.
- High accuracy.
- Alloy steel construction.
- Nice exterior and easy installation.

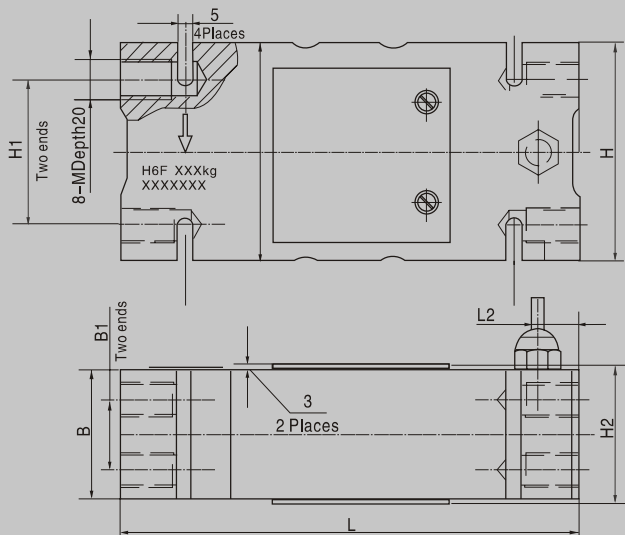


Specifications

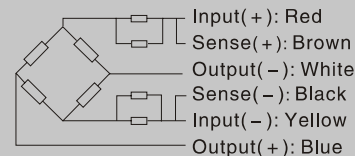
Capacity	Kg	50/100/150/200/250/300/400/500/750/1000/1500/2000	
Accuracy class		C2	C3
Maximum number of verification intervals	n _{max}	2000	3000
Minimum load cell verification interval	V _{min}	E _{max} /5000	E _{max} /7500
Combined error	(%FS)	≤ ± 0.030	≤ ± 0.020
Creep	(%FS/30min)	≤ ± 0.023	≤ ± 0.016
Temperature effect on sensitivity	(%FS/10°C)	≤ ± 0.017	≤ ± 0.011
Temperature effect on zero	(%FS/10°C)	≤ ± 0.029	≤ ± 0.019
Output sensitivity (Note 1)	(mv/v)	2.0 ± 0.2	
Input resistance (Note 2)	(Ω)	384 ± 4	
Output resistance	(Ω)	351 ± 2	
Insulation resistance	(MΩ)	≥ 5000(100VDC)	
Zero balance	(%FS)	1.0	
Temperature, compensated	(°C)	-10 ~ +40	
Temperature, allowed	(°C)	-35 ~ +70	
Excitation, Recommended	(V)	10(DC)	
Excitation, Max.	(V)	15(DC)	
Safe overload	(%FS)	120	
Ultimate overload	(%FS)	150	
Corner correction		0.02%load value /100mm	

Note: 1、S1 Type 2.0±0.002 2、S1 Type 400±20

Outline Dimension mm (inch)



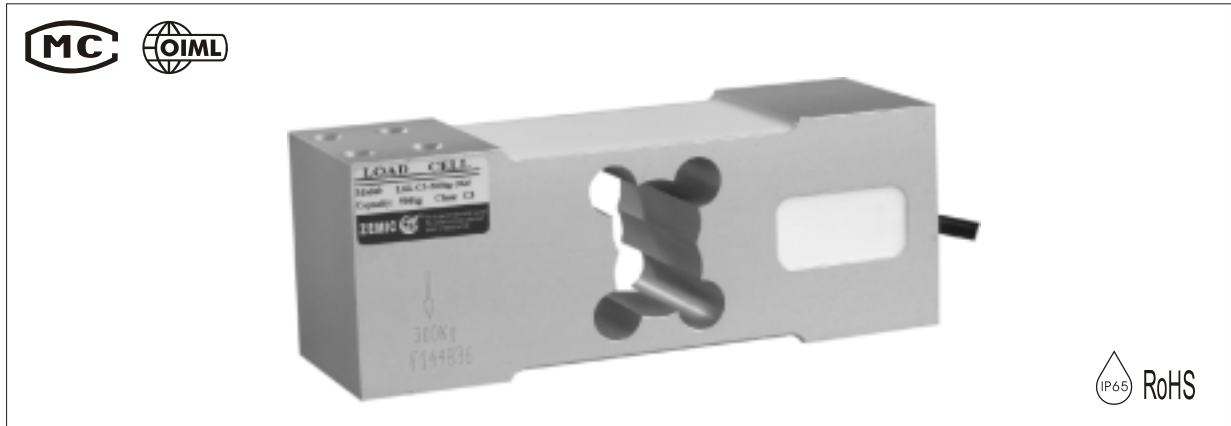
Capacity	50-200 kg	250-200 kg	750kg-2t
Dimension			
B	44(1.73)	60(2.36)	76(2.99)
B1	24(0.94)	36(1.42)	46(1.81)
H	75(2.95)	95(3.74)	125(4.92)
H1	50(1.97)	70(2.76)	95(3.74)
H2	50(1.97)	66(2.60)	82(3.23)
L	156(6.14)	146(5.75)	176(6.93)
L2	14(0.55)	11(0.43)	24(0.95)
M	M12-7H	M12-7H	M16-7H



Wiring:

- Shielded, 6 conductor cable.
- Standard cable length: 3m.
- Cable type and cable length for customer's own application are available on request.

LOAD CELL L6G



- L6G load cells are available for manifold accurate measurement in the capacities 50kg to 600kg
- Aluminum construction, silicone adhesive sealed, surface anodized and anti-corrosion.
- Integral structure and easy installation.
- They are suitable for pricing scale, platform scale and other electronic weighing devices.

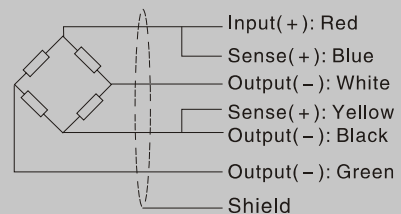
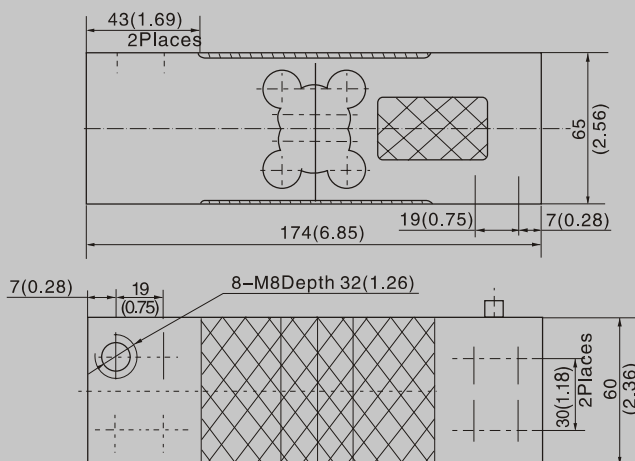
Important Features

- Capacities: 50kg~600kg.
- High accuracy.
- Aluminum parallel beam construction.
- Max. platform size: 600 × 600mm.
- Integral installation.
- With OIML approval: (PTB: D09-03.22).

Specifications

Capacity	kg	50/100/150/200/250/300/500/600		
Output Sensitivity	mv/v	2.0 ± 0.2		
Accuracy class		C3D	C3	C3G
Maximum number of verification intervals		2500	3000	4000
Minimum load cell verification interval	g	E _{max} /5000	E _{max} /7000	E _{max} /11000
Temperature effect on zero	%FS/10°C	0.0280	0.0200	0.0127
Temperature effect on sensitivity	+20°C~+40°C	0.0210	0.0175	0.0131
	-10°C~+20°C	0.0140	0.0117	0.0088
Combined error	%FS	0.0300	0.0200	0.0150
Creep	%FS	0.0200	0.0167	0.0125
Input resistance	Ω	406 ± 6/1065 ± 15		
Output resistance	Ω	350 ± 3/1000 ± 5		
Insulation resistance	MΩ	≥ 5000		
Zero balance	%FS	2		
Temperature, compensated	°C	-10 ~ +40		
Temperature, operating	°C	-20 ~ +50		
Excitation, Recommended	V	5-15		
Safe overload	%FS	150		
Ultimate overload	%FS	300		

Outline Dimension mm (inch)



• Dimensions and specifications are subject to change without notice.

Wiring:

- Adopt a shielded, 6 conductor cable, and cable jacket is PVC.
- Cable length: 3.0 ± 0.1m.
- Cable diameter: 6.0 ± 0.2mm.
- The shield is connected to the element.

LOAD CELL B6G



- B6G load cells are available for manifold accurate measurement in the capacities 50kg to 635kg.
- They offer 17–4PH stainless steel construction, complete hermetic sealing, oil proof, waterproof, anti-corrosive gas and medium making them suitable for use in all kinds of environments.
- Single point parallel beam, suitable for electronic scale, electronic platform scale, belt scale and other electronic weighing devices.
- Max. Platform size: 600 × 600

- Important Features**
- Capacities: 50kg ~ 635kg.
 - High accuracy.
 - Stainless steel construction.
 - Low profile and nice exterior.

Specifications

Maximum capacity	Kg	50/100/150/200/250/300/400/500/600/635	
Accuracy class		C2	C3
Maximum number of verification intervals	Π_{max}	2000	3000
Minimum load cell verification interval	V_{min}	$E_{max}/5000$	$E_{max}/7500$
Combined error	(%FS)	$\leq \pm 0.030$	$\leq \pm 0.020$
Creep	(%FS/30min)	$\leq \pm 0.023$	$\leq \pm 0.016$
Temperature effect on sensitivity	(%FS/10°C)	$\leq \pm 0.017$	$\leq \pm 0.011$
Temperature effect on zero	(%FS/10°C)	$\leq \pm 0.029$	$\leq \pm 0.019$
Output sensitivity (Note 1)	(mv/v)	2.0 ± 0.2	
Input resistance (Note 2)	(Ω)	384 ± 4	
Output resistance	(Ω)	351 ± 2	
Insulation resistance	(M Ω)	$\geq 5000(100VDC)$	
Zero balance	(%FS)	1.0	
Temperature, compensated	(°C)	-10 ~ +40	
Temperature, operating	(°C)	-35 ~ +70	
Excitation, Recommended	(V)	10(DC)	
Excitation, Max	(V)	15(DC)	
Safe overload	(%FS)	120	
Ultimate overload	(%FS)	150	
Corner correction		0.02% load value /100mm	

Note: 1、S1 Type 2.0±0.002 2、S1 Type 400±20

Outline Dimension mm(inch)

B6G-C3-XXXX-3B6-W1

B6G-C3-XXXX-3B6

Wiring:

- Shielded, 6 conductor cable.
- Standard cable length: 3m.
- Cable type and cable length for customer's own application are available on request.

Input(+): Red
 Sense(+): Brown
 Output(-): White
 Sense(-): Black
 Input(-): Yellow
 Output(+): Blue

LOAD CELL H6G



- H6G load cells are available for manifold accurate measurement in the capacity 50kg to 635kg
- Alloy steel, nickel plated, potted by adhesive inside, oil-proof, waterproof and anti-corrosive gas and medium, suitable for multiform environments.
- Single point cantilever, suitable for electronic scale, electronic platform scale, belt scale and other electronic weighing devices.
- Max. Platform size: 600 x 600

Important Features

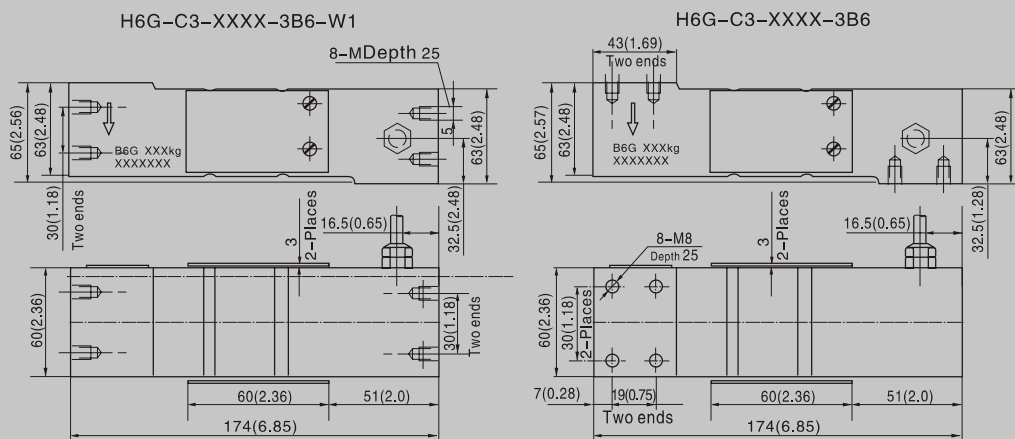
- Capacities: 50kg ~ 635kg.
- High accuracy.
- Alloy steel construction.
- Low profile and nice exterior.

Specifications

Capacity	Kg	50/100/150/200/250/300/400/500/600/635	
Accuracy class		C2	C3
Maximum number of verification intervals	n_{max}	2000	3000
Minimum load cell verification interval	V_{min}	$E_{max}/5000$	$E_{max}/7500$
Combined error	(%FS)	$\leq \pm 0.030$	$\leq \pm 0.020$
Creep	(%FS/30min)	$\leq \pm 0.023$	$\leq \pm 0.016$
Temperature effect on sensitivity	(%FS/10°C)	$\leq \pm 0.017$	$\leq \pm 0.011$
Temperature effect on zero	(%FS/10°C)	$\leq \pm 0.029$	$\leq \pm 0.019$
Output sensitivity (Note 1)	(mv/v)	2.0 ± 0.2	
Input resistance (Note 2)	(Ω)	384 ± 4	
Output resistance	(Ω)	351 ± 2	
Insulation resistance	(MΩ)	≥ 5000(100VDC)	
Zero balance	(%FS)	1.0	
Temperature, compensated	(°C)	-10 ~ +40	
Temperature, allowed	(°C)	-35 ~ +70	
Excitation, Recommended	(V)	10(DC)	
Excitation, Max.	(V)	15(DC)	
Safe overload	(%FS)	120	
Ultimate overload	(%FS)	150	
Corner correction		0.02%load value /100mm	

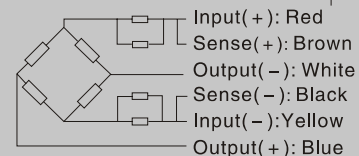
Note: 1、S1 Type 2.0±0.002 2、S1 Type 400±20

Outline Dimension mm (inch)



Wiring:

- Shielded, 6 conductor cable.
- Standard cable length: 3m.
- Transparent shield.
- Cable type and cable length for customer's own application are available on request.



LOAD CELL B6G5



- B6G5 load cells are available in the capacities 0.05t to 2t.
 - They offer 17-4PH stainless steel construction, complete hermetic sealing, oil proof, waterproof, anti-corrosive gas and medium making them suitable for use in all kinds of environments.
 - Single point parallel beam and they are suitable for electronic scale, electronic platform scale, belt scale and other electronic weighing devices.
 - Max. platform size: 50kg ~ 1t: 600 × 800 1.5t ~ 2t: 1000 × 1000
- Important Features:**
- Capacities: 0.05t ~ 2t.
 - High accuracy.
 - Stainless steel construction.
 - Nice exterior and easy installation.

Specifications

Capacity	Kg	0.05/0.1/0.15/0.2/0.25/0.3/0.4/0.5/0.6/0.75/1/1.5/2	
Accuracy class		C2	C3
Maximum number of verification intervals	n _{max}	2000	3000
Minimum load cell verification interval	V _{min}	E _{max} /5000	E _{max} /7500
Combined error	(%FS)	≤ ±0.030	≤ ±0.020
Creep	(%FS/30min)	≤ ±0.023	≤ ±0.016
Temperature effect on sensitivity	(%FS/10°C)	≤ ±0.017	≤ ±0.011
Temperature effect on zero	(%FS/10°C)	≤ ±0.029	≤ ±0.019
Output sensitivity (Note 1)	(mv/v)	2.0 ± 0.2	
Input resistance (Note 2)	(Ω)	384 ± 4	
Output resistance	(Ω)	351 ± 2	
Insulation resistance	(MΩ)	≥ 5000(100VDC)	
Zero balance	(%FS)	1.0	
Temperature, compensated	(°C)	-10 ~ +40	
Temperature, allowed	(°C)	-35 ~ +70	
Excitation, Recommended	(V)	10(DC)	
Excitation, Max.	(V)	15(DC)	
Safe overload	(%FS)	120	
Ultimate overload	(%FS)	150	
Corner correction		0.02% load value/100mm	

Note: 1、S1 Type 2.0±0.002 2、S1 Type 400±20

Outline Dimension mm (inch)

Capacity	50kg-1t	1.5t-2t
Dimension		
B	68(2.68)	76(0.11)
B1	38(1.50)	42(1.65)
H	77(3.03)	88(3.46)
H1	46(1.81)	55(2.17)
H2	64(2.52)	84(3.31)

Wiring:

- Shielded, 6 conductor cable.
- Standard cable length: 3m.
- Cable type and cable length for customer's own application are available on request.

LOAD CELL H6G5



- H6G5 load cells are available for manifold accurate measurement in the capacities 50kg to 2000kg
- Alloy steel, nickel plated, potted by adhesive inside, oil-proof, waterproof and anti-corrosive gas and medium, suitable for multiform environments.
- Single point cantilever, suitable for electronic scale, electronic platform scale, belt scale and all kinds of electronic weighing devices.
- Max.platform size: 50kg ~ 1t: 600 × 800 1.5t ~ 2t: 1000 × 1000

Important Features

- Capacities: 0.05t~2t.
- High accuracy.
- Alloy steel construction.
- Low profile and nice exterior and easy installation.

Specifications

Capacity	kg	0.05/0.1/0.15/0.2/0.25/0.3/0.4/0.5/0.6/0.75/1/1.5/2	
Accuracy class		C2	C3
Maximum number of verification intervals	nmax	2000	3000
Minimum load cell verification interval	vmin	E _{max} /5000	
Combined error	(%FS)	≤ ±0.030	≤ ±0.020
Creep	(%FS/30min)	≤ ±0.023	≤ ±0.016
Temperature effect on sensitivity	(%FS/10°C)	≤ ±0.017	≤ ±0.011
Temperature effect on zero	(%FS/10°C)	≤ ±0.029	≤ ±0.019
Output sensitivity (Note 1)	(mv/v)	2.0 ± 0.2	
Input resistance (Note 2)	(Ω)	384 ± 4	
Output resistance	(Ω)	351 ± 2	
Insulation resistance	(MΩ)	≥ 5000(100VDC)	
Zero balance	(%FS)	1.0	
Temperature, compensated	(°C)	-10 ~ +40	
Temperature, allowed	(°C)	-35 ~ +70	
Excitation, Recommended	(V)	10(DC)	
Excitation, Max.	(V)	15(DC)	
Safe overload	(%FS)	120	
Ultimate overload	(%FS)	150	
Corner correction		0.02%load value /100mm	

Note: 1.S1 Type 2.0 ± 0.002 2.S1 Type 400 ± 20

Outline Dimension mm (inch)

Capacity	50kg-1t	1.5t-2t
Dimension		
B	68 (2.68)	76 (0.11)
B1	38 (1.50)	42 (1.65)
H	77 (3.03)	88 (3.46)
H1	46 (1.81)	55 (2.17)
H2	64 (2.52)	84 (3.31)

Wiring:

- Shielded, 6 conductor cable.
- Standard cable length: 3m.
- Cable type and cable length for customer's own application are available on request.

LOAD CELL L6H5

- L6H5 load cells are available for manifold accurate measurement in the capacities 4kg to 20kg
- Aluminum construction, silicone adhesive sealed, surface anodized and anti-corrosion.
- Integral structure and easy installation.
- Suitable for electronic pricing scale, electronic packaging scale and other electronic weighing devices.

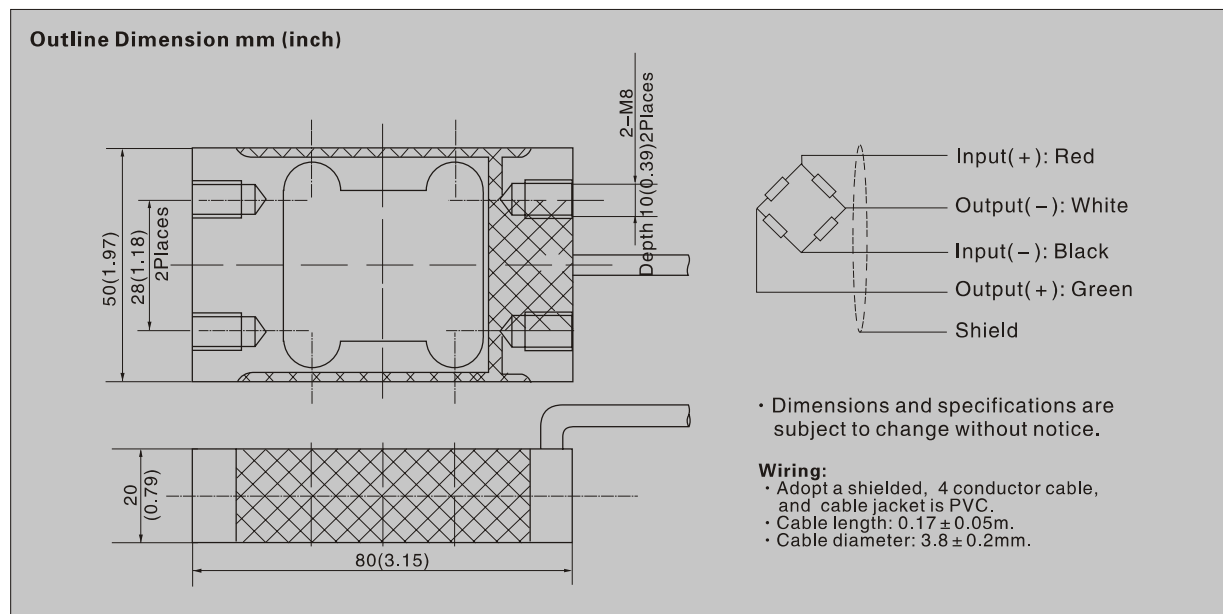
Important Features

- Capacities: 4kg~20kg.
- High accuracy.
- Aluminum cantilever beam structure.
- Max. platform size: 200 × 200mm.
- Integral installation.

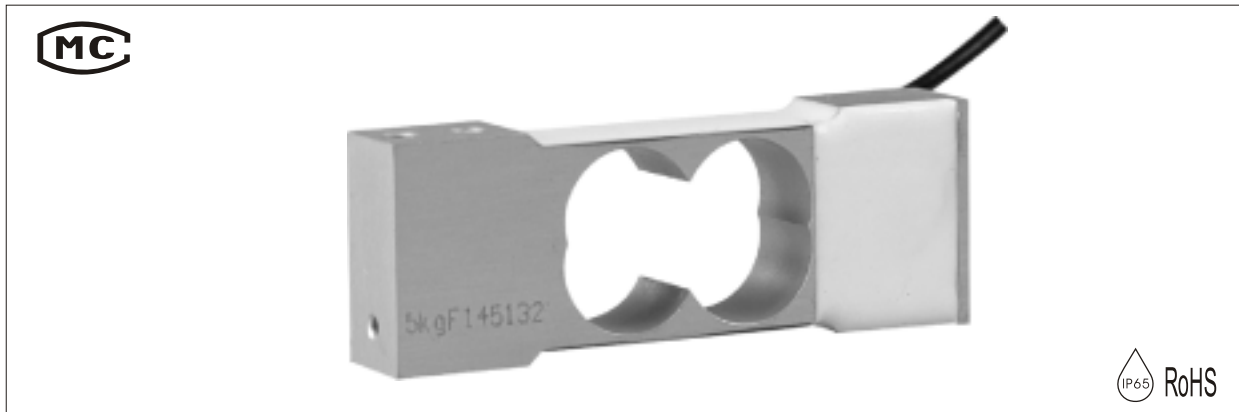


Specifications

Capacity	kg	4/5/8/10/20
Output Sensitivity	mv/v	2.0 ± 0.2
Accuracy class		C3D
Maximum number of verification intervals		2500
Minimum load cell verification interval	g	E _{max} /5000
Temperature effect on zero	%FS/10°C	0.0280
Temperature effect on sensitivity	+20°C~+40°C	0.0210
	-10°C~+20°C	0.0140
Combined error	%FS	0.0300
Creep	%FS	0.0200
Input resistance	Ω	409 ± 6
Output resistance	Ω	350 ± 3
Insulation resistance	MΩ	≥ 5000
Zero balance	%FS	2
Temperature, compensated	°C	-10 ~ +40
Temperature, operating	°C	-20 ~ +50
Excitation, Recommended	V	5-15
Safe overload	%FS	150
Ultimate overload	%FS	300



LOAD CELL L6J



- L6J load cells are available for manifold accurate measurement in the capacities 1kg to 20kg
- Aluminum construction, silicone adhesive sealed, surface anodized and anti-corrosion.
- Integral structure, easy installation.
- Suitable for electronic pricing scale, electronic counting scale, electronic balance and other electronic weighing devices.

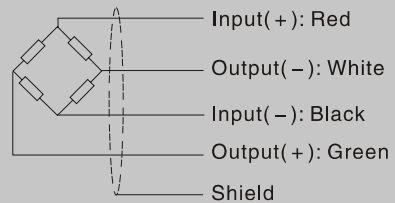
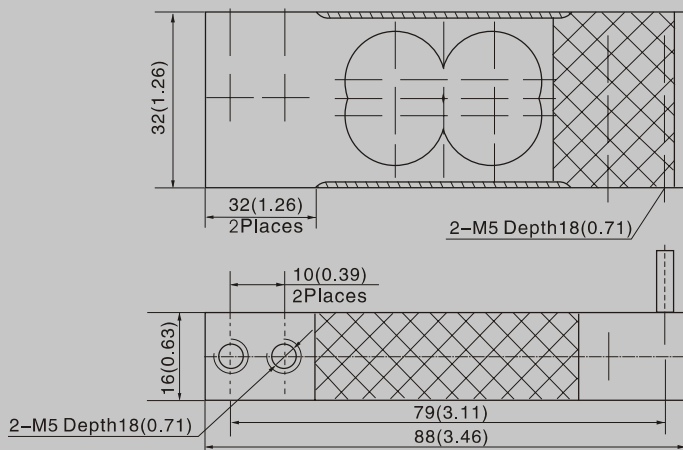
Important Features

- Capacities: 1kg~20kg.
- High accuracy.
- Aluminum cantilever beam structure.
- Max. platform size: 200 × 200mm.
- Integral installation.

Specifications

Capacity	kg	1/2/3/5/8/10/15/20
Output Sensitivity	mv/v	1.5 ± 0.2
Accuracy class		C3D
Maximum number of verification intervals		2500
Minimum load cell verification interval	g	E _{max} /5000
Temperature effect on zero	%FS/10°C	0.0280
Temperature effect on sensitivity	+20°C~+40°C	0.0210
	-10°C~+20°C	0.0140
Combined error	%FS	0.0300
Creep	%FS	0.0200
Input resistance	Ω	409 ± 6
Output resistance	Ω	350 ± 3
Insulation resistance	MΩ	≥5000
Zero balance	%FS	2
Rated temperature	°C	-10 ~ +40
Temperature, operating	°C	-20 ~ +50
Excitation, Recommended	V	5-15
Safe overload	%FS	150
Ultimate overload	%FS	300

Outline Dimension mm (inch)

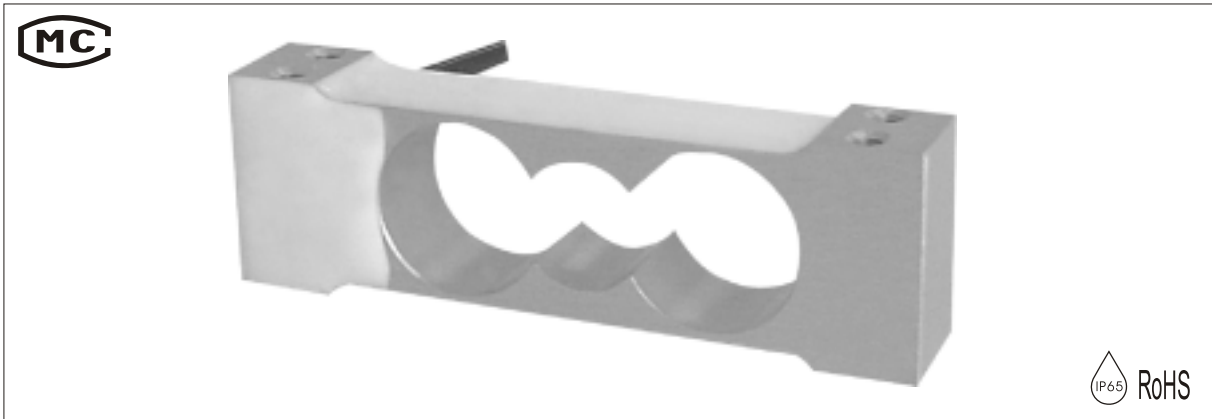


• Dimensions and specifications are subject to change without notice.

Wiring:

- Adopt a shielded, 4 conductor cable, and cable jacket is PVC.
- Cable length: 0.45 ± 0.05m.
- Cable diameter: 3.0 ± 0.2mm.

LOAD CELL L6J1



- L6J1 load cells are available for manifold accurate measurement in the capacities 0.3kg to 3kg.
- Aluminum construction, silicone adhesive sealed, surface anodized and anti-corrosion.
- Integral structure, easy installation.
- Suitable for electronic pricing scale, electronic counting scale, electronic balance and other electronic weighing devices.

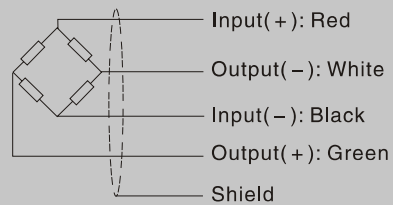
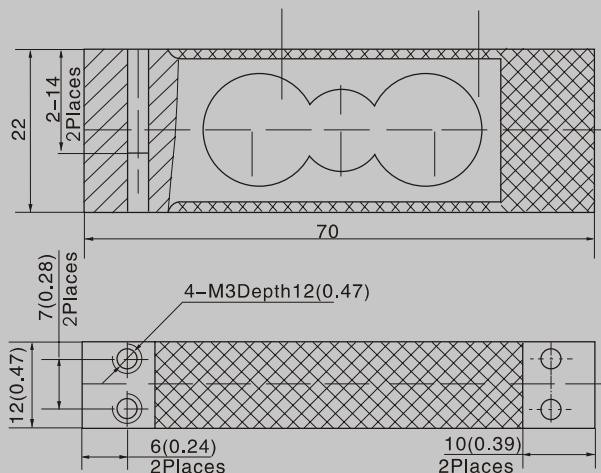
Important Features

- Capacities: 0.3kg~3kg.
- High accuracy.
- Aluminum cantilever beam structure.
- Max. platform size: 200×200mm.
- Integral installation.

Specifications

Capacity	kg	0.3/0.4/0.5/0.6/1/3	
Output Sensitivity	mv/v	1.0±0.1	
Accuracy class		C3D	
Maximum number of verification intervals		2500	
Minimum load cell verification interval	g	E _{max} /5000	
Temperature effect on zero	%FS/10°C	0.0280	
Temperature effect on sensitivity	+20°C~+40°C	%FS/10°C	0.0210
	-10°C~+20°C		
Combined error	%FS	0.0300	
Creep	%FS	0.0200	
Input resistance	Ω	394±6	
Output resistance	Ω	350±3	
Insulation resistance	MΩ	≥5000	
Zero balance	%FS	2	
Rated temperature	°C	-10 ~ +40	
Temperature, operating	°C	-20 ~ +50	
Excitation, Recommended	V	5-15	
Safe overload	%FS	150	
Ultimate overload	%FS	300	

Outline Dimension mm (inch)



• Dimensions and specifications are subject to change without notice.

Wiring:

- Adopt a shielded, 4 conductor cable, and cable jacket is PVC.
- Cable length: 0.45±0.05m.
- Cable diameter: 3.0±0.2mm.

LOAD CELL H6K

- H6K load cell is available for manifold accurate measurement in the capacity 1KN
- Alloy steel, nickel plated, potted by adhesive inside, oil-proof, waterproof and anti-corrosion, suitable for multiform environments.
- Single point parallel beam and easy installation, it is suitable for automobile testing facilities.
- It is safety and anti-explosion product that can be used in atrocious weather and hazardous areas .

Important Features

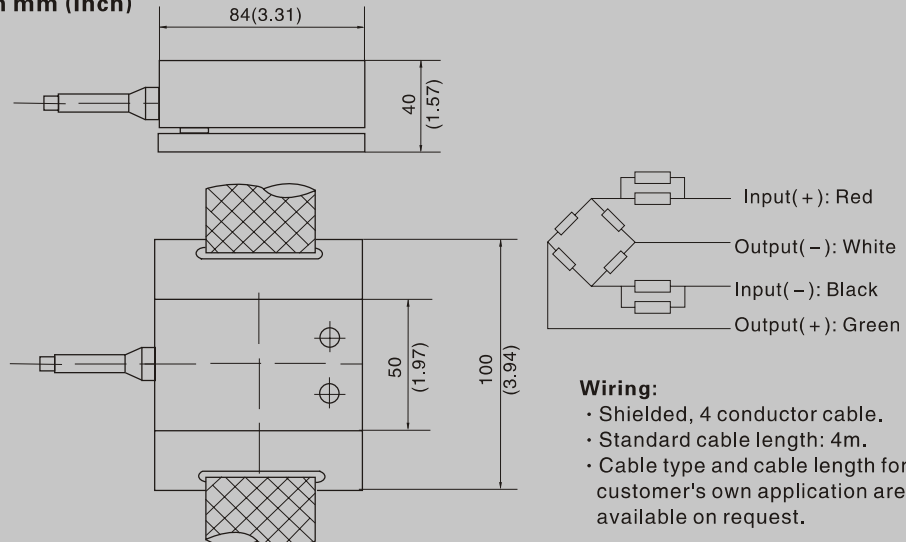
- Capacity: 1KN.
- High accuracy.
- Alloy steel construction.
- Low profile and nice exterior.



Specifications

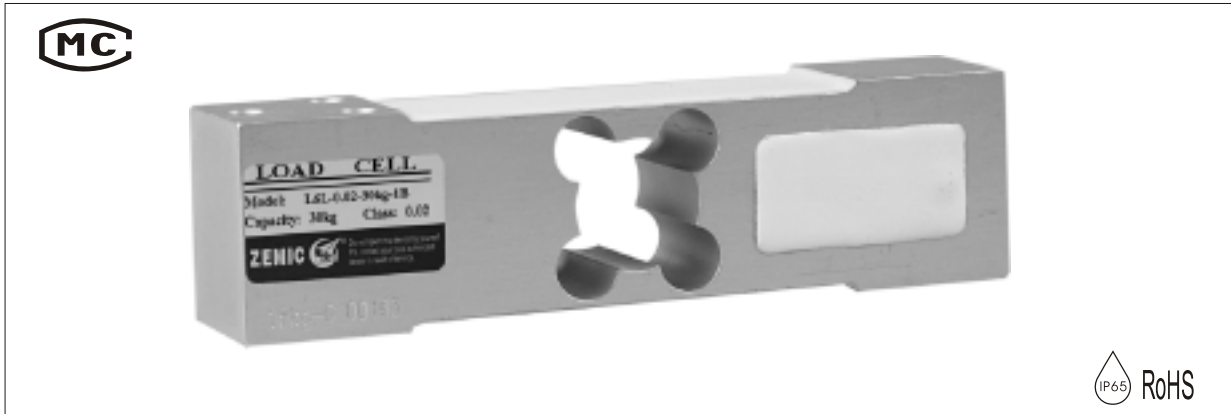
Capacity	KN	1	
Accuracy class		C2	C3
Maximum number of verification intervals	Π_{max}	2000	3000
Minimum load cell verification interval	V_{min}	$E_{max}/5000$	$E_{max}/7500$
Combined error	(%FS)	$\leq \pm 0.030$	$\leq \pm 0.020$
Creep	(%FS/30min)	$\leq \pm 0.023$	$\leq \pm 0.016$
Temperature effect on sensitivity	(%FS/10°C)	$\leq \pm 0.017$	$\leq \pm 0.011$
Temperature effect on zero	(%FS/10°C)	$\leq \pm 0.029$	$\leq \pm 0.019$
Repeatability	(mv/v)	0.03	
Rated output	(Ω)	2.0 ± 0.005	
Input resistance	(Ω)	400 ± 30	
Output resistance	(M Ω)	351 ± 2	
Insulation resistance	(%FS)	$\geq 5000(50VDC)$	
Zero balance	($^{\circ}C$)	1.5	
Temperature, compensated	($^{\circ}C$)	$-10 \sim +40$	
Temperature, operating	(V)	$-35 \sim +65$	
Excitation, Recommended	(V)	$5 \sim 12(DC)$	
Excitation, Max	(%FS)	18(DC)	
Safe overload	(%FS)	120	
Ultimate overload		150	

Outline Dimension mm (inch)



- Wiring:**
- Shielded, 4 conductor cable.
 - Standard cable length: 4m.
 - Cable type and cable length for customer's own application are available on request.

LOAD CELL L6L



- L6L load cells are available for manifold accurate measurement in the capacities 5kg to 200kg
- Aluminum construction, silicone adhesive sealed, surface anodized and anti-corrosion.
- Integral structure, easy for installation.
- Suitable for electronic pricing scale, electronic counting scale, platform scale and other electronic weighing devices.

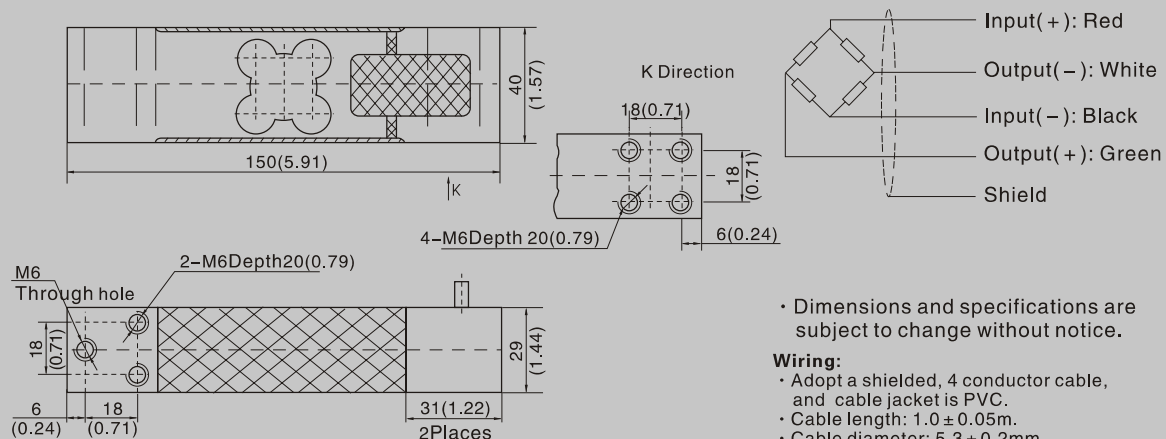
Important Features

- Capacities: 5kg~200kg.
- High accuracy.
- Aluminum cantilever beam structure.
- Max. platform size: 350×400mm.
- Integral installation.

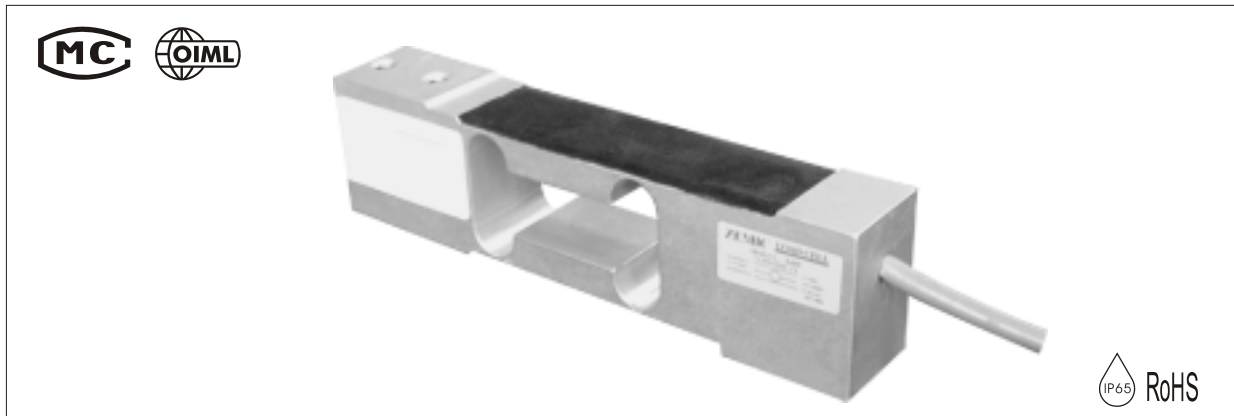
Specifications

Capacity	kg	5/8/10/15/20/30/50/80/100/150/200
Output Sensitivity	mv/v	2.0 ± 0.2
Accuracy class		C3D
Maximum number of verification intervals		2500
Minimum load cell verification interval	g	E _{max} /5000
Temperature effect on zero	%FS/10°C	0.0280
Temperature effect on sensitivity	+20°C~+40°C	%FS/10°C
	-10°C~+20°C	
Combined error	%FS	0.0300
Creep	%FS	0.0200
Input resistance	Ω	409 ± 6
Output resistance	Ω	350 ± 3
Insulation resistance	MΩ	≥5000
Zero balance	%FS	2
Rated temperature	°C	-10 ~ +40
Temperature, operating	°C	-20 ~ +50
Excitation, Recommended	V	5-15
Safe Overload	%FS	150
Ultimate Overload	%FS	300

Outline Dimension mm(inch)



LOAD CELL L6N



- L6N load cells are available for manifold accurate measurement in the capacities 3kg to 100kg
- Aluminum construction, silicone adhesive sealed, surface anodized and anti-corrosion.
- Integral structure, easy installation.
- Suitable for electronic pricing scale, electronic counting scale, platform scale and other electronic weighing devices.

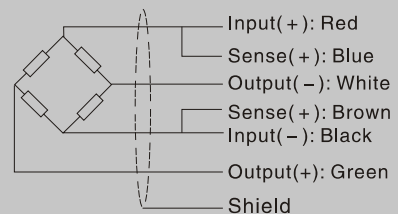
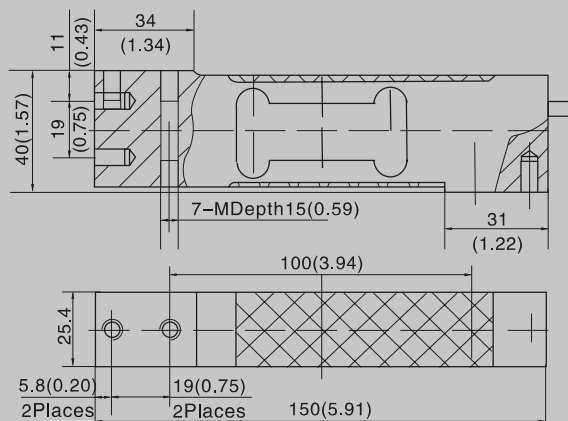
Important Features

- Capacities: 3kg~100kg.
- High accuracy.
- Aluminum cantilever beam structure.
- Max. platform size: 400×400mm.
- With OIML approval: (PTB: D09-06.11).

Specifications

Capacity	kg	3/5/8/10/15/20/30/50/75/100		
Output Sensitivity	mv/v	2.0 ± 0.2		
Accuracy class		C3D	C3	C3G
Maximum number of verification intervals		2500	3000	4000
Minimum load cell verification interval	g	E _{max} /5000	E _{max} /7000	E _{max} /11000
Temperature effect on zero	%FS/10°C	0.0280	0.0200	0.0127
Temperature effect on sensitivity	+20°C~+40°C	0.0210	0.0175	0.0131
	-10°C~+20°C	0.0140	0.0117	0.0088
Combined error	%FS	0.0300	0.0200	0.0150
Creep	%FS	0.0200	0.0167	0.0125
Input resistance	Ω	409 ± 6		
Output resistance	Ω	350 ± 3		
Insulation resistance	MΩ	≥ 5000		
Zero balance	%FS	2		
Rated temperature	°C	-10 ~ +40		
Temperature, operating	°C	-20 ~ +50		
Excitation, Recommended	V	5-15		
Safe overload	%FS	150		
Ultimate overload	%FS	300		

Outline Dimension mm (inch)



• Dimensions and specifications are subject to change without notice.

Wiring:

- Adopt a shielded, 6 conductor cable, and cable jacket is PVC.
- Cable length: 3.0 ± 0.05m.
- Cable diameter: 5.0 ± 0.2mm.

	Metric	Imperial
M	M6	1/4-20UNC

LOAD CELL B6N



- B6N load cells are available in the capacities 5kg to 200kg.
- They offer total stainless steel construction, complete hermetic sealing, oil proof, waterproof and anti-corrosion making them suitable for use in all kinds of environments.
- Single point parallel beam, easy installation and it is suitable for electronic platform scale, belt scale and other electronic weighing devices.
- It is safety and anti-explosion product and can be used in atrocious weather and hazardous areas .
- Max.platform size: 400 x 400mm

Important Features

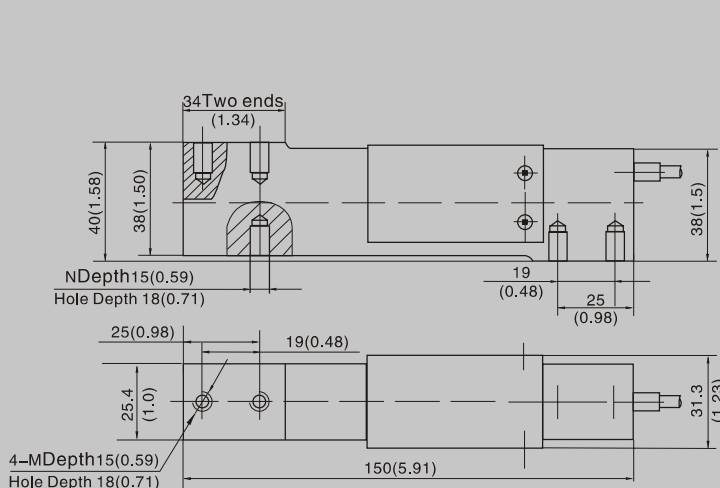
- Capacities: 5kg~200kg.
- High accuracy.
- Stainless steel construction.
- Low profile and nice exterior.

Specifications

Capacity	Kg	5/8/10/15/20/30/50/75/100/150/200	
Accuracy class		C2	C3
Maximum number of verification intervals	nmax	2000	3000
Minimum load cell verification interval	Vmin	Emax/5000	Emax/7500
Combined error	(%FS)	≤ ± 0.030	≤ ± 0.020
Creep	(%FS/30min)	≤ ± 0.023	≤ ± 0.016
Temperature effect on sensitivity	(%FS/10°C)	≤ ± 0.017	≤ ± 0.011
Temperature effect on zero	(%FS/10°C)	≤ ± 0.029	≤ ± 0.019
Output sensitivity (Note 1)	(mv/v)	2.0 ± 0.2	
Input resistance (Note 2)	(Ω)	383 ± 4	
Output resistance	(Ω)	351 ± 2	
Insulation resistance	(MΩ)	≥ 5000(50VDC)	
Zero balance	(%FS)	1.0	
Temperature, compensated	(°C)	-10 ~ +40	
Temperature, allowed	(°C)	-35 ~ +70	
Excitation, Recommended	(V)	10(DC)	
Excitation, Max.	(V)	15(DC)	
Safe overload	(%FS)	120	
Ultimate overload	(%FS)	150	
Corner correction		0.02% load value /100mm	

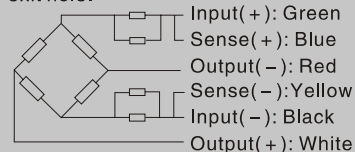
Note: 1、S1 Type 2.0±0.002 2、S1 Type 400±20

Outline Dimension mm(inch)



Note:

- Machining thread hole M and N basing on customers' requirements.
- When customers require imperial: Thread hole M is 1/4-20UNC-2B, Thread hole N is 1/4-28UNF-2B.
- When customers require metric: Thread holes M and N are M6-6H respectively and there will be "M" under exit hole.



Wiring:

- Shielded, 6 conductor cable.
- Standard cable length: 1m.
- Cable type and cable length for customer's own application are available on request.

LOAD CELL L6Q



- L6Q load cells are available for manifold accurate measurement in the capacities 50kg to 250kg
- Aluminum construction, silicone adhesive sealed, stainless steel cover, surface anodized and anti-corrosion.
- Integral structure and easy installation.
- Suitable for electronic pricing scale, electronic counting scale, platform scale and other electronic weighing devices.
- Max. platform size: 400 × 400mm

Important Features

- Capacities: 50kg~250kg.
- High accuracy.
- Aluminum cantilever beam structure.
- Max. platform size: 400 × 400mm.
- With OIML approval: (PTB: D09-07.06).

Specifications

Capacity	kg	50/100/150/200/250		
Output Sensitivity	mv/v	2.0 ± 0.2		
Accuracy class		C3D	C3	C3G
Maximum number of verification intervals		2500	3000	4000
Minimum load cell verification interval	g	E _{max} /5000	E _{max} /7000	E _{max} /11000
Temperature effect on zero	%FS/10°C	0.0280	0.0200	0.0127
Temperature effect on sensitivity	+20°C~+40°C	0.0210	0.0175	0.0131
	-10°C~+20°C	0.0140	0.0117	0.0088
Combined error	%FS	0.0300	0.0200	0.0150
Creep	%FS	0.0200	0.0167	0.0125
Input resistance (Note 1)	Ω	406 ± 6		
Output resistance (Note 2)	Ω	350 ± 3		
Insulation resistance	MΩ	≥ 5000		
Zero balance	%FS	2		
Rated temperature	°C	-10 ~ +40		
Temperature, operating	°C	-20 ~ +50		
Excitation, Recommended	V	5-15		
Safe overload	%FS	150		
Ultimate overload	%FS	300		

Note: 1.S1 Type 2.0 ± 0.002 2.S1 Type 400 ± 20

Outline Dimension mm (inch)

• Dimensions and specifications are subject to change without notice.

Wiring:

- Adopt a shielded, 6 conductor cable, and cable jacket is PVC.
- Cable length: 3.0 ± 0.05m.
- Cable diameter: 5.0 ± 0.2mm.

Screw hole	M
Metric	M6
Imperial	1/4-20UNC-2B

LOAD CELL B6Q



- B6Q load cells are available in the capacities 150kg, 200kg and 250kg.
- They offer total stainless steel construction, complete hermetic sealing, oil proof, waterproof and anti-corrosion making them suitable for use in all kinds of environments.
- Single point parallel beam, easy installation and it is suitable for electronic platform scale, belt scale and other electronic weighing devices.
- It is safety and anti-explosion product that can be used in atrocious weather and hazardous areas .
- Max.platform size:400×400mm

Important Features

- Capacities: 150kg, 200kg, 250kg.
- High accuracy.
- Stainless steel construction.
- Low profile and nice exterior.

Specifications

Capacity	Kg	150/200/250	
		C2	C3
Accuracy class		C2	C3
Maximum number of verification intervals	nmax	2000	3000
Minimum load cell verification interval	Vmin	E _{max} /5000	E _{max} /7500
Combined error	(%FS)	≤ ±0.030	≤ ±0.020
Creep	(%FS/30min)	≤ ±0.023	≤ ±0.016
Temperature effect on sensitivity	(%FS/10°C)	≤ ±0.017	≤ ±0.011
Temperature effect on zero	(%FS/10°C)	≤ ±0.029	≤ ±0.019
Output sensitivity	(mv/v)	2.0 ± 0.2	
Input resistance	(Ω)	383 ± 4	
Output resistance	(Ω)	351 ± 2	
Insulation resistance	(MΩ)	≥ 5000(50VDC)	
Zero balance	(%FS)	1.0	
Temperature, compensated	(°C)	-10 ~ +40	
Temperature, allowed	(°C)	-35 ~ +70	
Excitation, Recommended	(V)	10(DC)	
Excitation, Max.	(V)	15(DC)	
Safe overload	(%FS)	120	
Ultimate overload	(%FS)	150	

Note: 1、S1Type2.0±0.002 2、S1Type 400±20

Outline Dimension mm (inch)

Technical drawing showing dimensions in mm (inch):

- 8-18 (0.71)
- 38.1 Two ends (1.5)
- 8-1/4-20UNC-2B Depth 15(0.59)
- 8 (0.31)
- 38 (1.5)
- 39.9 (1.57)
- 9.35 (0.37)
- 12 (0.47)
- 10 (0.39)
- 1/4-28UNF-2B Depth 10 (0.4)
- 6.35 (0.25)
- 73 (2.87)
- 25.4 (1.0) 2Places
- 9.35 (0.37)
- 25.4 (1.0) 4Places
- 150 (0.59)
- 38.1 (1.5)

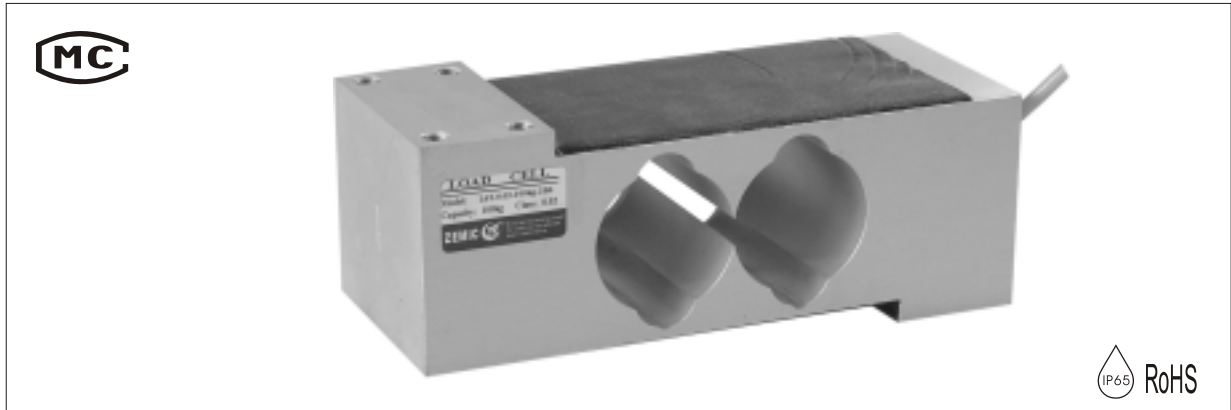
Wiring Diagram:

- Input (+): Green
- Sense (+): Blue
- Output (-): Red
- Sense (-): Yellow
- Input (-): Black
- Output (+): White

Wiring:

- Shielded, 6 conductor cable.
- Standard cable length: 1.5m.
- Cable type and cable length for customer's own application are available on request.

LOAD CELL L6T



- L6T load cells are available for manifold accurate measurement in the capacities 50kg to 1000kg
- Aluminum construction, silicone adhesive sealed, surface anodized and anti-corrosion.
- Integral structure and easy installation.
- Suitable for electronic platform scale, or dual structure electronic scale and other electronic weighing devices.

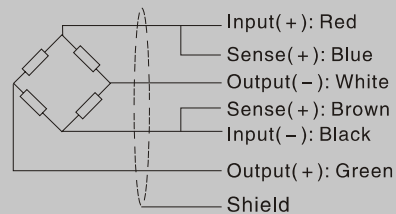
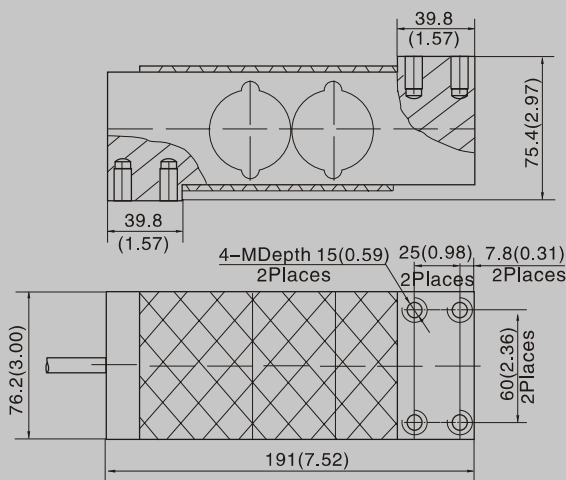
Important Features

- Capacities: 50kg~1000kg.
- High accuracy.
- Aluminum cantilever beam structure.
- Max. platform size: 600×600mm.
- Integral installation.

Specifications

Capacity	kg	50/75/100/150/200/250/300/500/635/1000		
Output Sensitivity	mv/v	2.0±0.2		
Accuracy class		C3D	C3	C3G
Maximum number of verification intervals		2500	3000	4000
Minimum load cell verification interval	g	E _{max} /5000	E _{max} /7000	E _{max} /11000
Temperature effect on zero	%FS/10°C	0.0280	0.0200	0.0127
Temperature effect on sensitivity	+20°C~+40°C	0.0210	0.0175	0.0131
	-10°C~+20°C	0.0140	0.0117	0.0088
Combined error	%FS	0.0300	0.0200	0.0150
Creep	%FS	0.0200	0.0167	0.0125
Input resistance	Ω	409±6		
Output resistance	Ω	350±3		
Insulation resistance	MΩ	≥5000		
Zero balance	%FS	2		
Rated temperature	°C	-10 ~ +40		
Temperature, operating	°C	-20 ~ +50		
Excitation, Recommended	V	5-15		
Safe overload	%FS	150		
Ultimate overload	%FS	300		

Outline Dimension mm (inch)



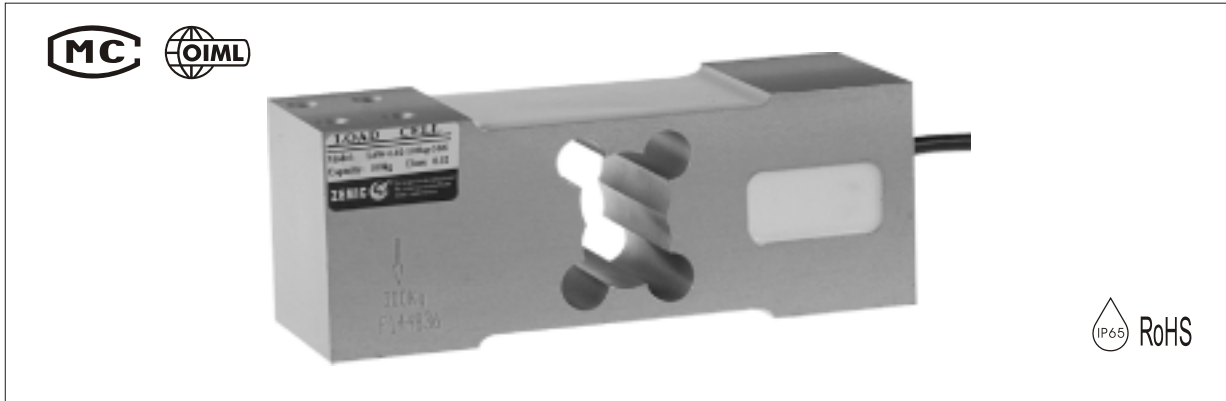
• Dimensions and specifications are subject to change without notice.

Wiring:

- Adopt a shielded, 6 conductor cable, and cable jacket is PVC.
- Cable length: 3.0±0.1m.
- Cable diameter: 5.0±0.2mm.

	Metric	Imperial
M	M8	5/16-18UNC

LOAD CELL L6W



- L6W load cells are available for manifold accurate measurement in the capacities 50kg to 635kg
- Aluminum construction, silicone adhesive sealed, surface anodized and anti-corrosion.
- Integral structure and easy installation.
- Suitable for electronic pricing scale, electronic platform scale and other electronic weighing devices.

Important Features

- Capacities: 50kg~635kg.
- High accuracy.
- Aluminum cantilever beam structure.
- Max.platform size:
50Kg~200Kg: 600×600mm
250Kg~635Kg: 600×800mm.
- With OIML approval: (PTB: D09-0612)

Specifications

Capacity	kg	50/75/100/150/200/250/300/500/635		
Output Sensitivity	mv/v	2.0±0.2		
Accuracy class		C3D	C3	C3G
Maximum number of verification intervals		2500	3000	4000
Minimum load cell verification interval	g	E _{max} /5000	E _{max} /7000	E _{max} /11000
Temperature effect on zero	%FS/10°C	0.0280	0.0200	0.0123
Temperature effect on sensitivity	+20°C~+40°C	0.0210	0.0175	0.0131
	-10°C~+20°C	0.0140	0.0117	0.0088
Combined error	%FS	0.0300	0.0233	0.0150
Creep	%FS	0.0200	0.0167	0.0125
Input resistance	Ω	406±6		
Output resistance	Ω	350±3		
Insulation resistance	MΩ	≥5000		
Zero balance	%FS	2		
Rated temperature	°C	-10 ~ +40		
Temperature, operating	°C	-20 ~ +50		
Excitation, Recommended	V	5-15		
Safe overload	%FS	150		
Ultimate overload	%FS	300		

Outline Dimension mm (inch)

Wiring:

- Input(+): Red
- Sense(+): Blue
- Output(-): White
- Sense(+): Brown
- Input(-): Black
- Output(+): Green
- Shield

• Dimensions and specifications are subject to change without notice.

• Adopt a shielded, 6 conductor cable, and cable jacket is PU.

• Cable length: 3±0.1m.

• Cable diameter: 4.7±0.2mm.

• The shield is connected to the element.

LOAD CELL BM6A



- BM6A load cells are available in the capacities 6kg to 60kg.
- They offer total stainless steel construction, complete hermetic sealing, oil proof, waterproof and anti-corrosion making them suitable for use in all kinds of environments.
- Single point, easy installation and flexible application. They are suitable for platform scale, packing scale and other electronic weighing devices.
- It is safety and anti-explosion product that can be used in atrocious weather and hazardous areas .
- Max.platform size:300 × 300mm

Important Features:

- Capacities: 6kg~60kg.
- High accuracy.
- Stainless steel construction.
- Low profile and nice exterior.

Specifications

Capacity	Kg	6/12/15/30/60	
Accuracy class		C2	C3
Maximum number of verification intervals	nmax	2000	3000
Minimum load cell verification interval	Vmin	Emax/5000	Emax/7500
Combined error	(%FS)	≤ ±0.030	≤ ±0.020
Creep	(%FS/30min)	≤ ±0.024	≤ ±0.016
Temperature effect on sensitivity	(%FS/10°C)	≤ ±0.017	≤ ±0.011
Temperature effect on zero	(%FS/10°C)	≤ ±0.029	≤ ±0.019
Output sensitivity (Note 1)	(mv/v)	2.0 ± 0.2	
Input resistance (Note 2)	(Ω)	400 ± 20	
Output resistance	(Ω)	351 ± 2	
Insulation resistance	(MΩ)	≥ 5000(50VDC)	
Zero balance	(%FS)	1.0	
Temperature, compensated	(°C)	-10 ~ +40	
Temperature, allowed	(°C)	-35 ~ +65	
Excitation, Recommended	(V)	5 ~ 12(DC)	
Excitation, Max.	(V)	18(DC)	
Safe overload	(%FS)	120	
Ultimate overload	(%FS)	150	

Note: 1. S1Type2.0±0.002 2. S1Type 400±20

Outline Dimension mm (inch)

Capacity	W
6kg	18.5(0.79)
12kg	18.5(0.79)
15kg	18.5(0.79)
30kg	18.5(0.79)
60kg	23.5(0.93)

Wiring:

- Shielded, 6 conductor cable.
- Standard cable length: 6m.
- Cable type and cable length for customer's own application are available on request.

LOAD CELL BM6G



- BM6G load cells are available in the capacities 75kg to 500kg.
- They offer total stainless steel construction, complete hermetic sealing, oil proof, waterproof and anti-corrosion making them suitable for use in all kinds of environments.
- Single point, easy installation and flexible application and they are suitable for platform scale, belt scale and other electronic weighing devices.
- It is safety and anti-explosion product that can be used in atrocious weather and hazardous areas .
- Max.platform size:600 × 600mm

Important Features:

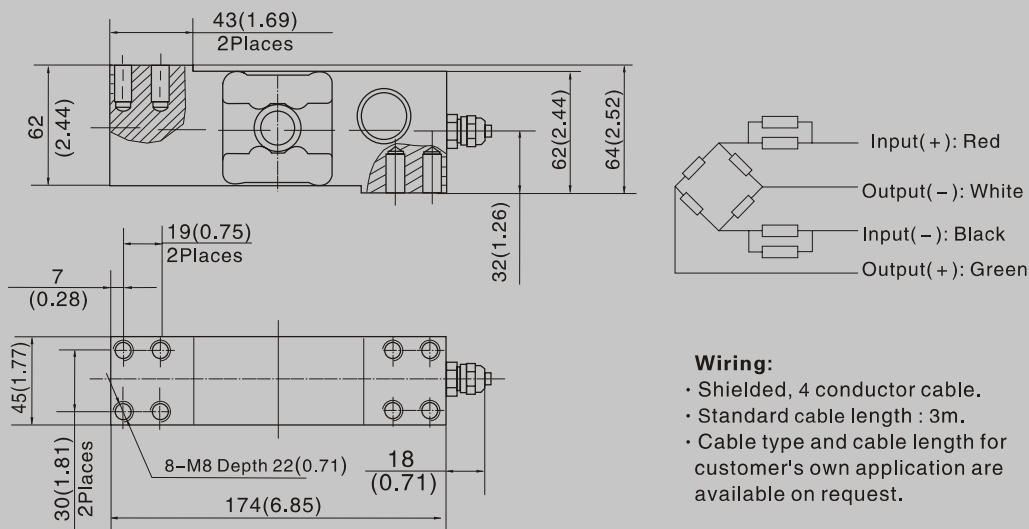
- Capacities: 75kg-500kg.
- High accuracy.
- Stainless steel construction.
- Low profile and nice exterior.

Specifications

Capacity	Kg	75/100/150/200/300/400/500	
Accuracy class		C2	C3
Maximum number of verification intervals	Π_{max}	2000	3000
Minimum load cell verification interval	V_{min}	$E_{max}/5000$	$E_{max}/7500$
Combined error	(%FS)	$\leq \pm 0.030$	$\leq \pm 0.020$
Creep	(%FS/30min)	$\leq \pm 0.023$	$\leq \pm 0.016$
Temperature effect on sensitivity	(%FS/10°C)	$\leq \pm 0.017$	$\leq \pm 0.011$
Temperature effect on zero	(%FS/10°C)	$\leq \pm 0.029$	$\leq \pm 0.019$
Output sensitivity (Note 1)	(mv/v)	2.0 ± 0.2	
Input resistance (Note 2)	(Ω)	350 ± 3.5	
Output resistance	(Ω)	351 ± 2	
Insulation resistance	(MΩ)	≥ 5000(50VDC)	
Zero balance	(%FS)	1.0	
Temperature, compensated	(°C)	-10 ~ +40	
Temperature, allowed	(°C)	-35 ~ +65	
Excitation, Recommended	(V)	10(DC)	
Excitation, Max.	(V)	15(DC)	
Safe overload	(%FS)	120	
Ultimate overload	(%FS)	150	

Note: 1. S1Type 2.0 ± 0.002 2. S1Type 400 ± 20

Outline Dimension mm (inch)



Wiring:

- Shielded, 4 conductor cable.
- Standard cable length : 3m.
- Cable type and cable length for customer's own application are available on request.

LOAD CELL H8



- H8 load cells are available for manifold accurate measurement in the capacities 0.5t to 25t
- Alloy steel, cover welded, oil-proof, waterproof and anti-corrosion, suitable for all kinds of environment.
- Single shear beam, easy for installation, suitable for electronic truck scales, track scales, hopper scales, and other electronic weighing devices.
- It is safety and anti-explosion product that can be used in atrocious weather and hazardous areas .

Important Features

- Capacities: 0.5t~25t.
- High accuracy.
- Alloy steel construction.
- Low profile and nice exterior.
- With OIML approval: (PTB: D09-05.20).

Accessories

- HL-8-001 · HY-8-101 · HM-8-401

Specifications

Capacity	t	0.5/1/2/2.5/3/5/10/15/20/25			
		C2	C3	A5M	B10M
Accuracy class					
Approvals			OIML R60 C3		
Maximum number of verification intervals	\bar{n}_{max}	2000	3000	5000	10000
Minimum load cell verification interval	V_{min}	$E_{max}/5000$	$E_{max}/7500$	$E_{max}/15000$	$E_{max}/10000$
Combined error	(%FS)	$\leq \pm 0.030$	$\leq \pm 0.020$	$\leq \pm 0.026$	$\leq \pm 0.050$
Creep	(%FS/30min)	$\leq \pm 0.023$	$\leq \pm 0.016$	$\leq \pm 0.017$	$\leq \pm 0.040$
Temperature effect on sensitivity	(%FS/10°C)	$\leq \pm 0.017$	$\leq \pm 0.011$	$\leq \pm 0.013$	$\leq \pm 0.040$
Temperature effect on zero	(%FS/10°C)	$\leq \pm 0.029$	$\leq \pm 0.019$	$\leq \pm 0.014$	$\leq \pm 0.020$
Output sensitivity	(mv/v)	2.0 ± 0.002			
Input resistance	(Ω)	350 ± 3.5			
Output resistance	(Ω)	351 ± 2			
Insulation resistance	(MΩ)	≥ 5000(50VDC)			
Zero balance	(%FS)	1.5			
Temperature, compensated	(°C)	-10 ~ +40			
Temperature, allowed	(°C)	-35 ~ +65			
Excitation, Recommended	(V)	5 ~ 12(DC)			
Excitation, Max	(V)	18(DC)			
Safe overload	(%FS)	120			
Ultimate overload	(%FS)	150			

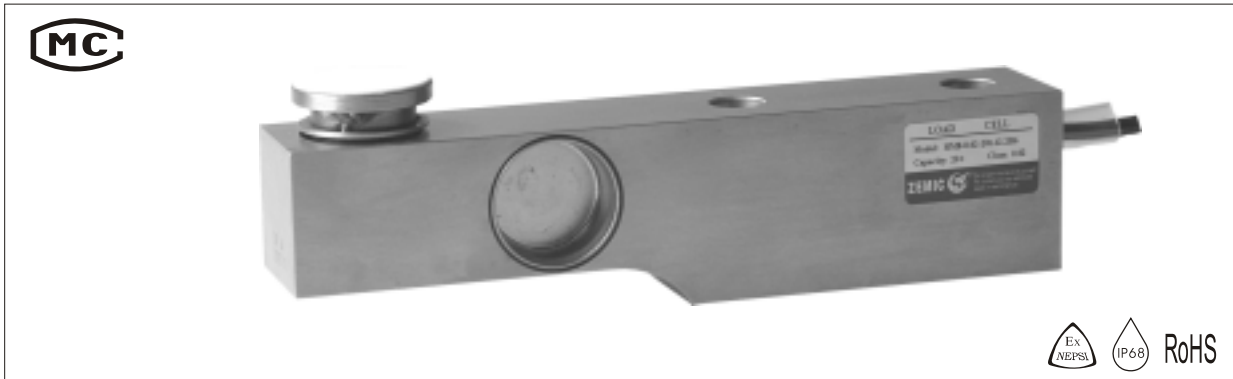
Outline Dimension mm (inch)

Capacity	H1	H2	H3	H	φ D	φ d	W	L	L1	L2	L3	L4	L5	L6
0.5-2t	43 (1.69)	37 (1.47)	5 (0.2)	57.9 (2.28)	35 (1.38)	13 (0.51)	37 (1.47)	203 (7.99)	95 (3.74)	22 (0.87)	98 (3.86)	64 (2.52)	/	/
2.5 t	43 (1.69)	37 (1.47)	5 (0.2)	57.9 (2.28)	35 (1.38)	15 (0.59)	37 (1.47)	203 (7.99)	95 (3.74)	22 (0.87)	98 (3.86)	64 (2.52)	/	/
3t	43 (1.69)	37 (1.47)	5 (0.2)	62.9 (2.48)	35 (1.38)	15 (0.59)	37 (1.47)	203 (7.997)	95 (3.74)	22 (0.87)	98 (3.86)	64 (2.52)	/	/
5t	52 (2.05)	48 (1.89)	8 (0.31)	78.7 (3.1)	42 (1.65)	21 (0.83)	48 (1.89)	235 (9.25)	110 (4.33)	22 (0.87)	124 (4.88)	66 (2.6)	/	/
10t,15t	67 (2.64)	60 (2.36)	12 (0.47)	127.7 (5.03)	57 (2.24)	28 (1.10)	60 (2.36)	279 (10.98)	133 (5.24)	32 (1.26)	140 (5.51)	82 (3.22)	/	/
20t,25t	82.5 (3.25)	70 (2.76)	12 (0.47)	143.5 (5.65)	70 (2.76)	34 (1.34)	70 (2.76)	318 (12.52)	153 (6.02)	38 (1.5)	159 (6.26)	89 (3.5)	/	/
30t	115 (4.53)	90 (3.54)	18 (0.71)	174 (6.85)	70 (2.76)	26 (1.02)	96 (3.78)	374 (14.72)	189 (7.44)	44.5 (1.75)	181 (7.13)	76 (2.99)	51 (2.01)	46 (1.81)
50t	143 (5.63)	100 (3.94)	28 (1.1)	213 (8.39)	85 (3.35)	29 (1.14)	105 (4.13)	416 (16.38)	210 (8.27)	48 (1.89)	196 (7.72)	92 (3.62)	56 (2.2)	52 (2.05)

Wiring:

- Shielded, 4 conductor cable: φ 6.2mm.
- Standard cable length 4m(0.5~3t), 7m(5t), 12m(10~50t).
- Cable type and cable length for customer's own application are available on request.

LOAD CELL HM8

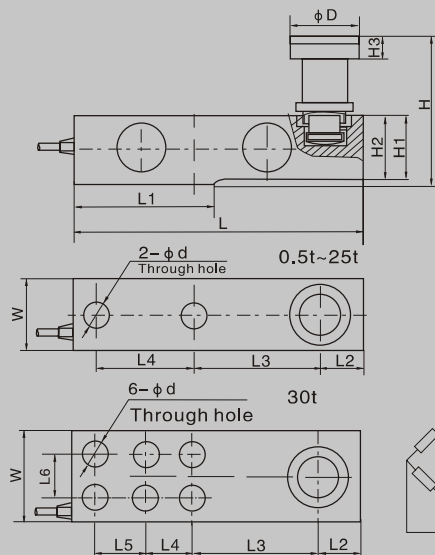


- HM8 load cells are available for manifold accurate measurement in the capacities 0.5t to 50t
 - Alloy steel, hermetically sealed, oil-proof, waterproof and anti-corrosion, suitable for all kinds of environment.
 - Single shear beam, easy for installation, suitable for electronic truck scale, track scale, hopper scale, and other electronic weighing devices.
 - It is safety and anti-explosion product that can be used in atrocious weather and hazardous areas .
- Important Features**
- Capacities: 0.5t~50t.
 - High accuracy.
 - Alloy steel construction.
 - Low profile and nice exterior.

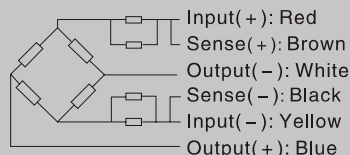
Specifications

Capacity	t	0.5/1/2/2.5/3/5/10/15/20/25/30			
		C2	C3	A5M	B10M
Accuracy class					
Maximum number of verification intervals	nmax	2000	3000	5000	10000
Minimum load cell verification interval	Vmin	E _{max} /5000	E _{max} /7500	E _{max} /15000	E _{max} /10000
Combined error	(%FS)	≤ ±0.030	≤ ±0.020	≤ ±0.026	≤ ±0.050
Creep	(%FS/30min)	≤ ±0.023	≤ ±0.016	≤ ±0.017	≤ ±0.040
Temperature effect on sensitivity	(%FS/10°C)	≤ ±0.017	≤ ±0.011	≤ ±0.013	≤ ±0.040
Temperature effect on zero	(%FS/10°C)	≤ ±0.029	≤ ±0.019	≤ ±0.014	≤ ±0.020
Output sensitivity	(mv/v)	2.0 ± 0.002			
Input resistance	(Ω)	350 ± 3.5			
Output resistance	(Ω)	351 ± 2			
Insulation resistance	(MΩ)	≥ 5000(50VDC)			
Zero balance	(%FS)	1.0			
Temperature, compensated	(°C)	-10 ~ +40			
Temperature, allowed	(°C)	-35 ~ +65			
Excitation, Recommended	(V)	5 ~ 12(DC)			
Excitation, Max	(V)	18(DC)			
Safe overload	(%FS)	120			
Ultimate overload	(%FS)	150			

Outline Dimension mm (inch)



Dimension Capacity	Dimension															
	H1	H2	H3	H	φ D	φ d	W	L	L1	L2	L3	L4	L5	L6		
0.5-2t	43 (1.69)	37 (1.47)	5 (0.2)	57.9 (2.28)	35 (1.38)	13 (0.51)	37 (1.47)	203 (7.99)	95 (3.74)	22 (0.87)	98 (3.86)	64 (2.52)	/	/		
2.5 t	43 (1.69)	37 (1.47)	5 (0.2)	57.9 (2.28)	35 (1.38)	15 (0.59)	37 (1.47)	203 (7.99)	95 (3.74)	22 (0.87)	98 (3.86)	64 (2.52)	/	/		
3t	43 (1.69)	37 (1.47)	5 (0.2)	62.9 (2.48)	35 (1.38)	15 (0.59)	37 (1.47)	203 (7.997)	95 (3.74)	22 (0.87)	98 (3.86)	64 (2.52)	/	/		
5t	52 (2.05)	48 (1.89)	8 (0.31)	78.7 (3.1)	42 (1.65)	21 (0.83)	48 (1.89)	235 (9.25)	110 (4.33)	22 (0.87)	124 (4.88)	66 (2.6)	/	/		
10t,15t	67 (2.64)	60 (2.36)	12 (0.47)	127.7 (5.03)	57 (2.24)	28 (1.10)	60 (2.36)	279 (10.98)	133 (5.24)	32 (1.26)	140 (5.51)	82 (3.22)	/	/		
20t,25t	82.5 (3.25)	70 (2.76)	12 (0.47)	143.5 (5.65)	70 (2.76)	34 (1.34)	70 (2.76)	318 (12.52)	153 (6.02)	38 (1.5)	159 (6.26)	89 (3.5)	/	/		
30t	115 (4.53)	90 (3.54)	18 (0.71)	174 (6.85)	70 (2.76)	26 (1.02)	96 (3.78)	374 (14.72)	189 (7.44)	44.5 (1.75)	181 (7.13)	76 (2.99)	51 (2.01)	46 (1.81)		



- Wiring:**
- Shielded, 6 conductor cable: φ 6.2mm.
 - Standard cable length: 6.5m.
 - Cable type and cable length for customer's own application are available on request.

LOAD CELL H8B



- H8B load cells are available for manifold accurate measurement in the capacities 0.5t to 10t
- Alloy steel, potted by adhesive inside, steel ball supported, oil-proof, waterproof and anti-corrosion, suitable for all kinds of environment.
- Single shear beam, easy for installation, suitable for electronic truck scales, track scales, automobile test line, hopper scales, and other electronic weighing devices.
- It is safety and anti-explosion product that can be used in atrocious weather and hazardous areas .

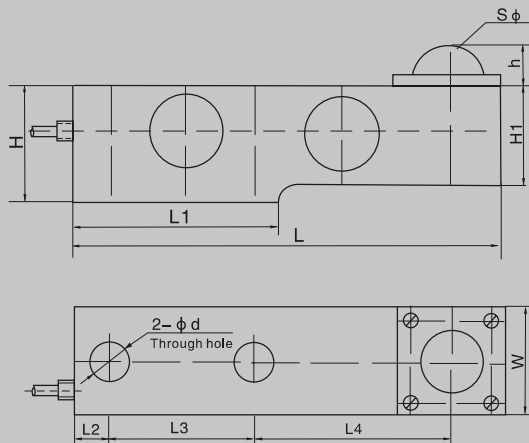
Important Features

- Capacities: 0.5t~10t.
- High accuracy.
- Alloy steel construction.
- Low profile and nice exterior.

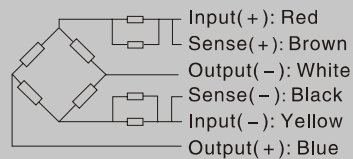
Specifications

Capacity	t	0.5/1/2/2.5/3/4/5/8/10			
		C2	C3	A5M	B10M
Accuracy class					
Maximum number of verification intervals	Π_{max}	2000	3000	5000	10000
Minimum load cell verification interval	Vmin	Emax/5000	Emax/7500	Emax/15000	Emax/10000
Combined error	(%FS)	$\leq \pm 0.030$	$\leq \pm 0.020$	$\leq \pm 0.026$	$\leq \pm 0.050$
Creep	(%FS/30min)	$\leq \pm 0.023$	$\leq \pm 0.016$	$\leq \pm 0.017$	$\leq \pm 0.040$
Temperature effect on sensitivity	(%FS/10°C)	$\leq \pm 0.017$	$\leq \pm 0.011$	$\leq \pm 0.013$	$\leq \pm 0.040$
Temperature effect on zero	(%FS/10°C)	$\leq \pm 0.029$	$\leq \pm 0.019$	$\leq \pm 0.014$	$\leq \pm 0.020$
Output sensitivity	(mv/v)	2.0 ± 0.004			
Input resistance	(Ω)	350 ± 3.5			
Output resistance	(Ω)	351 ± 2			
Insulation resistance	(MΩ)	≥ 5000(50VDC)			
Zero balance	(%FS)	1.0			
Temperature, compensated	(°C)	-10 ~ +40			
Temperature, allowed	(°C)	-35 ~ +65			
Excitation, Recommended	(V)	5 ~ 12(DC)			
Excitation, Max	(V)	18(DC)			
Safe overload	(%FS)	120			
Ultimate overload	(%FS)	150			

Outline Dimension mm (inch)



Dimension Capacity	L	L1	L2	L3	L4	H	H1	φd	W	h	S φ
0.5-2	203 (7.99)	102 (4.02)	19 (0.75)	63.5 (2.5)	98 (3.86)	43 (1.69)	37 (1.46)	13 (0.51)	37 (1.46)	15.4 (0.61)	28 (1.1)
3,4	203 (7.99)	102 (4.02)	19 (0.75)	63.5 (2.5)	98 (3.86)	52 (2.05)	44 (1.73)	17 (0.67)	40 (1.57)	15.4 (0.61)	
5	235 (9.25)	118 (4.65)	21 (0.83)	66.5 (2.62)	124 (4.88)	52 (2.05)	48 (1.89)	21 (0.83)	48 (1.89)	18.16 (0.71)	32 (1.26)
8	235 (9.25)	118 (4.65)	8 (0.87)	74 (2.91)	114 (4.49)	52 (2.05)	48 (1.89)	27.5 (1.08)	48 (1.89)	18.16 (0.71)	
10	279 (10.98)	140 (5.51)	25 (0.98)	83 (3.27)	140 (5.51)	82.6 (3.25)	60 (2.36)	21 (0.83)	60 (2.36)	28.4 (1.12)	52.8 (2.08)



Wiring:

- Shielded, 6 conductor cable: φ 6.2mm.
- Standard cable length: 3.5m.
- Cable type and cable length for customer's own application are available on request.

LOAD CELL H8C



- H8C load cells are available for manifold accurate measurement in the capacities 1Kbto 20Klb and 0.5t to 10t
- Alloy steel, potted by adhesive inside, oil-proof, waterproof and anti-corrosion, suitable all kinds of environments.
- Single shear beam, easy for installation, suitable for electronic platform scale, hopper scale, and other electronic weighing devices.
- It is safety and anti-explosion product that can be used in atrocious weather and hazardous areas .

Important Features

- Capacities: 1Kb~20Klb: 0.5t~10t.
- High accuracy.
- Alloy steel construction.
- Low profile and nice exterior.
- Combined error (%FS): 0.02 .
- With OIML approval : (PTB:D09-03.19 2).
- With NTEP approval: (Certificate No.: CC07-012).

Accessories

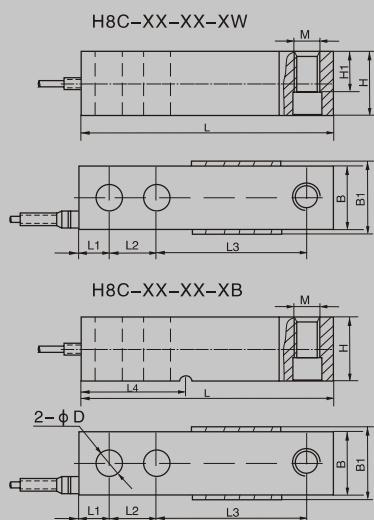
- HJ-8-201
- HJ-8-203
- HJ-8-204
- HJ-8-208
- HJ-8-213
- HJ-8-214
- HJ-8-215
- HJ-8-216
- HY-8-102
- HY-8-103
- HY-8-105
- HD-8-301
- HM-8-402

Specifications

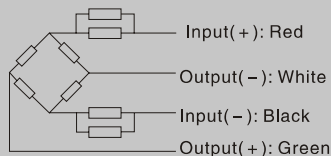
Capacity	t	0.5/1/1.5/2/2.5/3/5/10				
	Klb	1/1.5/2/2.5/3/4/5/7.5/10/15/20				
Accuracy class		C2	C3	C4	A5M	B10M
Approvals			OIML R60 C3		III 5000 多只	III L 10000 多只
Maximum number of verification intervals	Π_{max}	2000	3000	4000	5000	10000
Minimum load cell verification interval	V_{min}	$E_{max}/5000$	$E_{max}/10000$	$E_{max}/14000$	$E_{max}/15000$	$E_{max}/10000$
Combined error	(%FS)	$\leq \pm 0.030$	$\leq \pm 0.020$	$\leq \pm 0.018$	$\leq \pm 0.026$	$\leq \pm 0.050$
Creep	(%FS/30min)	$\leq \pm 0.024$	$\leq \pm 0.016$	$\leq \pm 0.012$	$\leq \pm 0.017$	$\leq \pm 0.040$
Temperature effect on sensitivity	(%FS/10°C)	$\leq \pm 0.017$	$\leq \pm 0.011$	$\leq \pm 0.009$	$\leq \pm 0.013$	$\leq \pm 0.040$
Temperature effect on zero	(%FS/10°C)	$\leq \pm 0.023$	$\leq \pm 0.015$	$\leq \pm 0.010$	$\leq \pm 0.014$	$\leq \pm 0.020$
Output sensitivity	(mv/v)	2.0 ± 0.002		3.0 ± 0.003		
Input resistance	(Ω)	350 ± 3.5				
Output resistance	(Ω)	351 ± 2				
Insulation resistance	(M Ω)	$\geq 5000(100VDC)$				
Zero balance	(%FS)	1.0				
Temperature, compensated	(°C)	-10 ~ +40				
Temperature, allowed	(°C)	-35 ~ +65				
Excitation, Recommended	(V)	5 ~ 12(DC)				
Excitation, Max	(V)	18(DC)				
Safe overload	(%FS)	120				
Ultimate overload	(%FS)	150				

Note: This product has the strain groove, is not suitable for Australia market. Please choose H8C-XX-XX-XW for Australia users.

Outline Dimension mm (inch)



Dimension Capacity	L	L1	L2	L3	L4	H	H1	B	B1	ϕD	M	
500kg-2000kg	130 (5.12)	15.8 (0.62)	25.4 (1.0)	76.2 (3.0)	54.2 (2.13)	31.8 (1.25)	15.8 (0.62)	31.8 (1.25)	34 (1.34)	13.5 (0.53)	M12 x 1.75	
1K-4K	130 (5.12)	15.8 (0.62)	25.4 (1.0)	76.2 (3)	54.2 (2.13)	38.1 (1.5)	15.8 (0.62)	31.8 (1.25)	34 (1.34)	13.5 (0.53)	1/2-20UNF	
5K(SE)	130 (5.12)	15.8 (0.62)	25.4 (1.0)	76.2 (3)	54.2 (2.13)	38.1 (1.5)	15.8 (0.62)	31.8 (1.25)	34 (1.34)	13.5 (0.53)	1/2-20UNF	
2500kg-5000kg	171.5 (6.75)	19.1 (0.75)	38.1 (1.5)	95.3 (3.75)	77.2 (3.04)	38.1 (1.5)	18.8 (0.74)	38.1 (1.5)	40 (1.57)	19.8 (0.78)	M18 x 1.5	
5K-10K	171.5 (6.75)	19.1 (0.75)	38.1 (1.5)	95.3 (3.75)	77.2 (3.04)	38.1 (1.5)	18.8 (0.74)	38.1 (1.5)	40 (1.57)	19.8 (0.78)	3/4-16UNF	
10t	222.3 (8.75)	24.5 (1.0)	50.8 (2.0)	120.7 (4.75)	101.6 (4)	50.8 (2.0)	52.4 (2.1)	50.8 (2)	52.4 (2.06)	26 (1.02)	26.92 (1.06)	M24 x 2
20k	222.3 (8.75)	25.4 (1.0)	50.8 (2.0)	120.7 (4.75)	101.6 (4)	50.8 (2.0)	52.4 (2.1)	50.8 (2)	52.4 (2.06)	26 (1.02)	26.92 (1.06)	1-12UNF



Wiring:

- Shielded, 6 conductor cable: $\Phi 5$ mm.
- Standard cable length: 4m(0.5t~2t), 6m(2.5t~10t)(1Kb~20Klb).
- Cable type and cable length for customer's own application are available on request.

LOAD CELL HM8C



- HM8C load cells are available for manifold accurate measurement in the capacities 0.5t to 5t
- Alloy steel, hermetically sealed, oil-proof, waterproof and anti-corrosion, suitable for multiform environments.
- Single shear beam, easy installation, suitable for electronic platform scale, hopper scale, and other electronic weighing devices.
- It is safety and anti-explosion product that can be used in atrocious weather and hazardous areas .

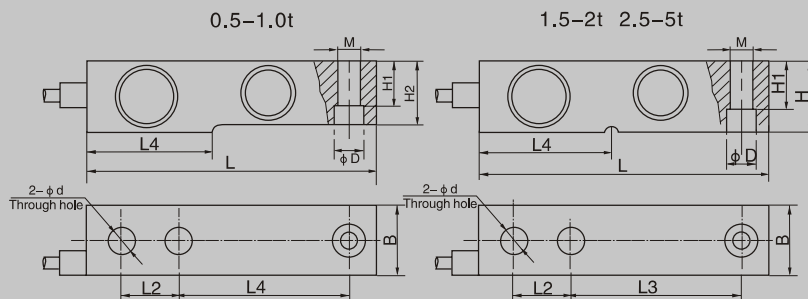
Important Features

- Capacities: 0.5t~5t.
- High accuracy.
- Alloy steel construction.
- Low profile and nice exterior.

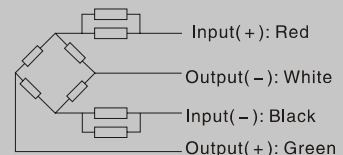
Specifications

Capacity	t	0.5/1/1.5/2/3/5/10				
		C1	C2	C3	A5M	B10M
Accuracy class	∇ max	1000	2000	3000	5000	10000
Maximum number of verification intervals	∇ min	Emax/3000	Emax/5000	Emax/7500	Emax/15000	Emax/10000
Minimum load cell verification interval	(%FS)	$\leq \pm 0.050$	$\leq \pm 0.030$	$\leq \pm 0.020$	$\leq \pm 0.026$	$\leq \pm 0.050$
Creep	(%FS/30min)	$\leq \pm 0.038$	$\leq \pm 0.023$	$\leq \pm 0.016$	$\leq \pm 0.017$	$\leq \pm 0.040$
Temperature effect on sensitivity	(%FS/10°C)	$\leq \pm 0.028$	$\leq \pm 0.017$	$\leq \pm 0.011$	$\leq \pm 0.013$	$\leq \pm 0.040$
Temperature effect on zero	(%FS/10°C)	$\leq \pm 0.047$	$\leq \pm 0.029$	$\leq \pm 0.019$	$\leq \pm 0.014$	$\leq \pm 0.020$
Output sensitivity	(mv/v)	2.0 ± 0.004				
Input resistance	(Ω)	350 ± 3.5				
Output resistance	(Ω)	351 ± 2				
Insulation resistance	(M Ω)	$\geq 5000(50VDC)$				
Zero balance	(%FS)	1.5				
Temperature, compensated	(°C)	-10 ~ +40				
Temperature, allowed	(°C)	-35 ~ +65				
Excitation, Recommended	(V)	5 ~ 12(DC)				
Excitation, Max	(V)	18(DC)				
Safe overload	(%FS)	120				
Ultimate overload	(%FS)	150				

Outline Dimension mm (inch)



Dimension Capacity	L	L1	L2	L3	H	B	ϕD	ϕd	M	L4	H1	H2
0.5	130 (5.12)	15.8 (0.62)	25.4 (1.0)	76.2 (3.0)	31.8 (1.25)	31.8 (1.25)	13.5 (0.53)	13.5 (0.53)	M12	53.7 (2.11)	15.8 (0.62)	26 (1.02)
1.0	130 (5.12)	15.8 (0.62)	25.4 (1.0)	76.2 (3.0)	31.8 (1.25)	31.8 (1.25)	13.5 (0.53)	13.5 (0.53)	M12	53.7 (2.11)	15.8 (0.62)	28 (1.1)
1.5-2	130 (5.12)	15.8 (0.62)	25.4 (1.0)	76.2 (3.0)	31.8 (1.25)	31.8 (1.25)	13.5 (0.53)	13.5 (0.53)	M12	54.2 (2.11)	15.8 (0.62)	
2.5	171.5 (6.75)	19.1 (0.75)	38.1 (1.5)	95.3 (3.75)	38.1 (1.5)	38.1 (1.5)	19.8 (0.78)	19.8 (0.78)	M18 x 1.5	76.2 (3.0)	18.8 (0.74)	34 (1.34)
3-5	171.5 (6.75)	19.1 (0.75)	38.1 (1.5)	95.3 (3.45)	50.8 (2.0)	50.8 (2.0)	19.8 (0.78)	19.8 (0.78)	M18 x 1.5	77.2 (3.04)	18.8 (0.74)	



Wiring:

- Shielded, 4 conductor cable.
- Standard cable length: 4m(0.5~2t), 6m(2.5~5t).
- Cable type and cable length for customer's own application are available on request.

LOAD CELL B8D



- B8D load cells are available in the capacities 250lb to 20Klb and 0.5t to 10t.
- They offer total stainless steel construction, complete hermetic sealing, oil proof, waterproof and anti-corrosion making them suitable for use in all kinds of environments.
- Single shear beam, easy installation and they are suitable for floor scale, automobile test facilities, hopper scale and other electronic weighing devices.
- It is safety and anti-explosion product that can be used in atrocious weather and hazardous areas .

Important Features

- Capacities: 250lb~20Klb; 0.25t~5t.
- High accuracy.
- Stainless steel construction.
- Low profile and nice exterior.
- With OIML approval: (PTB:D09-05.19).

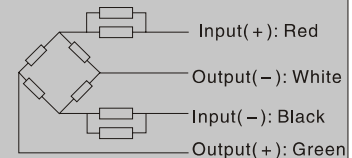
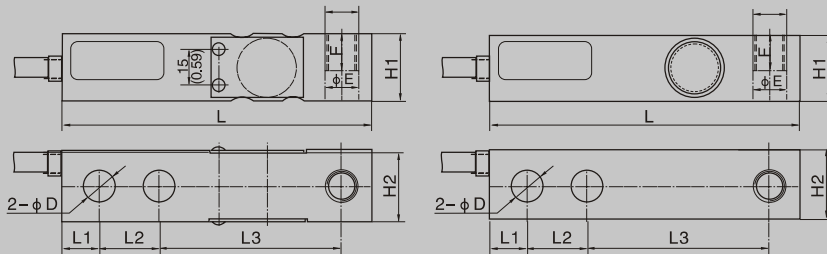
Accessories

- BJ-8-202 • BJ-8-212 • BY-8-104
- BJ-8-205 • BJ-8-219 • BM-8-104
- BJ-8-209 • BJ-8-220
- BJ-8-211 • BJ-8-221

Specifications

Capacity	t	0.1/0.15/0.2/0.25/0.3/0.4/0.5/0.75/1/1.5/2/3/5/7.5/10			
	lb	250/500/750/1K/1.5K/2K/2.5K/2.5KLE/3K/4K/5K/5KSE/7.5K/10K/15K/20K			
Accuracy class		C2	C3	A5M	B10M
Approvals			OIML R60 C3		
Maximum number of verification intervals	n_{max}	2000	3000	5000	10000
Minimum load cell verification interval	v_{min}	Emax/5000	Emax/7500	Emax/15000	Emax/10000
Combined error	(%FS)	$\leq \pm 0.030$	$\leq \pm 0.020$	$\leq \pm 0.026$	$\leq \pm 0.050$
Creep	(%FS/30min)	$\leq \pm 0.023$	$\leq \pm 0.016$	$\leq \pm 0.017$	$\leq \pm 0.040$
Temperature effect on sensitivity	(%FS/10°C)	$\leq \pm 0.017$	$\leq \pm 0.011$	$\leq \pm 0.013$	$\leq \pm 0.040$
Temperature effect on zero	(%FS/10°C)	$\leq \pm 0.029$	$\leq \pm 0.019$	$\leq \pm 0.014$	$\leq \pm 0.020$
Output sensitivity	(mv/v)	2.0 ± 0.002			
Input resistance	(Ω)	350 ± 3.5			
Output resistance	(Ω)	351 ± 2			
Insulation resistance	(MΩ)	≥ 5000(50VDC)			
Zero balance	(%FS)	1.0			
Temperature, compensated	(°C)	-10 ~ +40			
Temperature, allowed	(°C)	-35 ~ +65			
Excitation, Recommended	(V)	5 ~ 12(DC)			
Excitation, Max	(V)	18(DC)			
Safe overload	(%FS)	120			
Ultimate overload	(%FS)	150			

Outline Dimension mm (inch)



Capacity	Dimension										
	L	L1	L2	L3	D	H1	H2	E	F	M	
150kg,250kg,0.1t,0.2t,0.3t,0.4t,0.5t,250lb,500lb,750lb,K	130.05 (5.12)	15.7 (0.62)	25.4 (1.0)	76.2 (3.0)	13.2 (0.52)	30.2 (1.19)	30.2 (1.19)	13.4 (0.53)	16 (0.63)	M12-6H 1/2-20UNF-2B	
750kg,1t,1.5t,2t,1.5K,2K,2.5K,3K,4K,5KSE	130 (5.12)	15.7 (0.62)	25.4 (1.0)	76.2 (3.0)	13.4 (0.53)	30.2 (1.19)	30.2 (1.19)	13.4 (0.53)	16 (0.63)	M12-6H 1/2-20UNF-2B	
3t,5t,7.5t,2.5K,5K,7.5K,10K,15K	171 (6.73)	19 (0.75)	38.1 (1.5)	95.2 (3.75)	20.6 (0.81)	36.8 (1.45)	36.8 (1.45)	20.6 (0.81)	20 (0.79)	M20 × 2.5-6H 3/4-15UNF-2B	
10t 20K	171 (6.73)	25.4 (1.0)	50.8 (2.0)	120.7 (4.75)	26.9 (1.06)	49.5 (1.95)	49.5 (1.95)	26.9 (1.06)	26 (1.02)	M24 × 2-6H 1-12UNF-2B	

Wiring:

- Shielded, 4 conductor cable.
- Cable: $\phi 5$ mm.
- Standard cable length: 6m.
- Cable type and cable length for customer's own application are available on request.